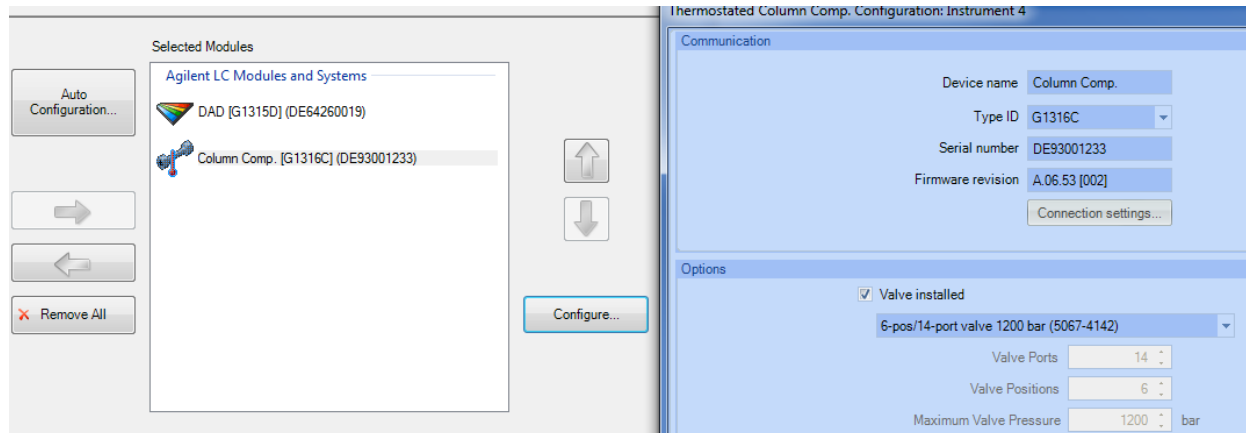


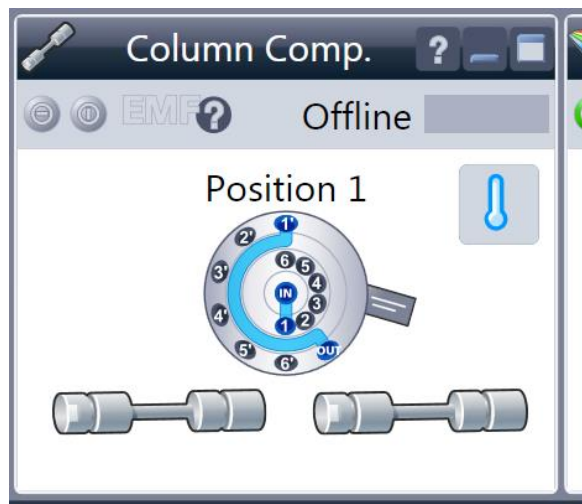
G1316 TCC New RFID Tag in User Interface

Old-type RFID tag Valve installed with firmware A.06.53

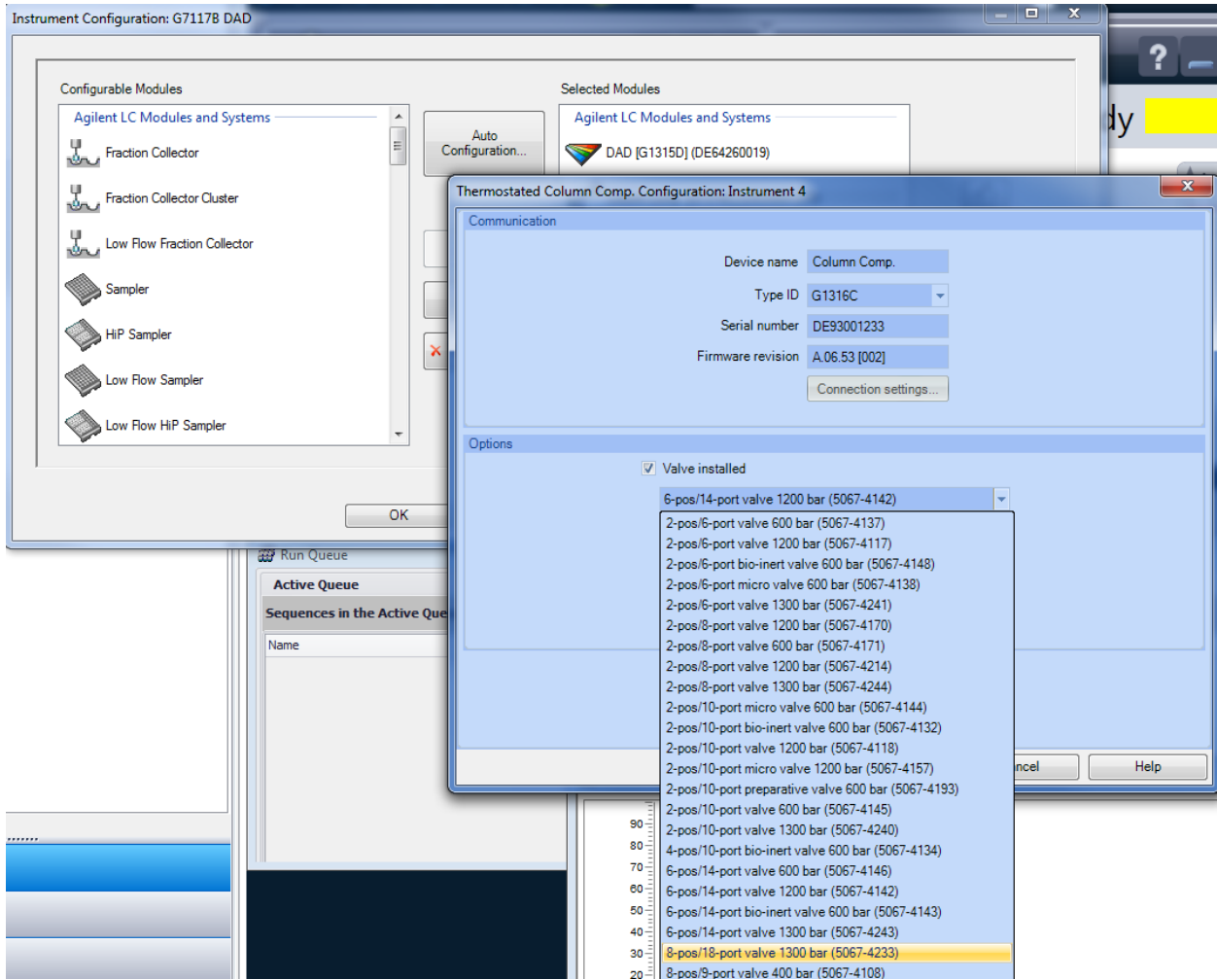


New-type RFID tag Valve installed with firmware A.06.53

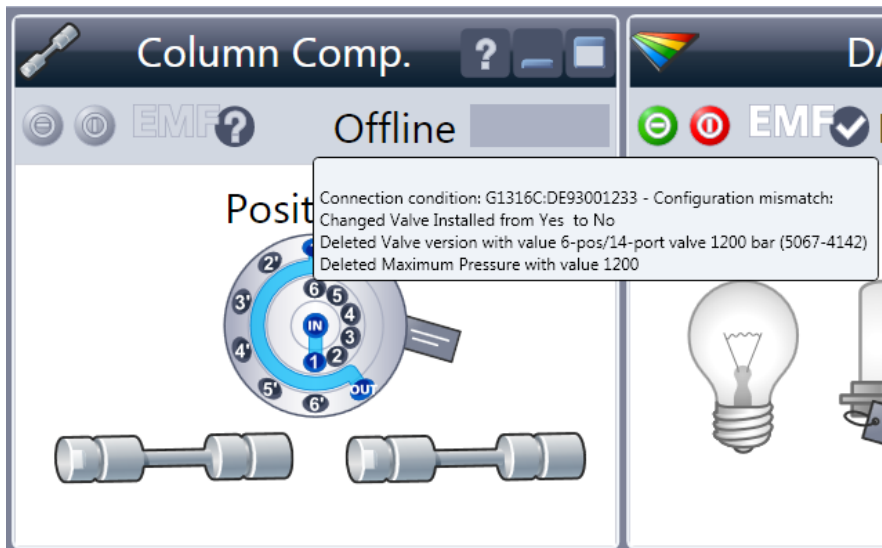
CS shows OFFLINE due to Configuration change.



Change the configuration to new valve type



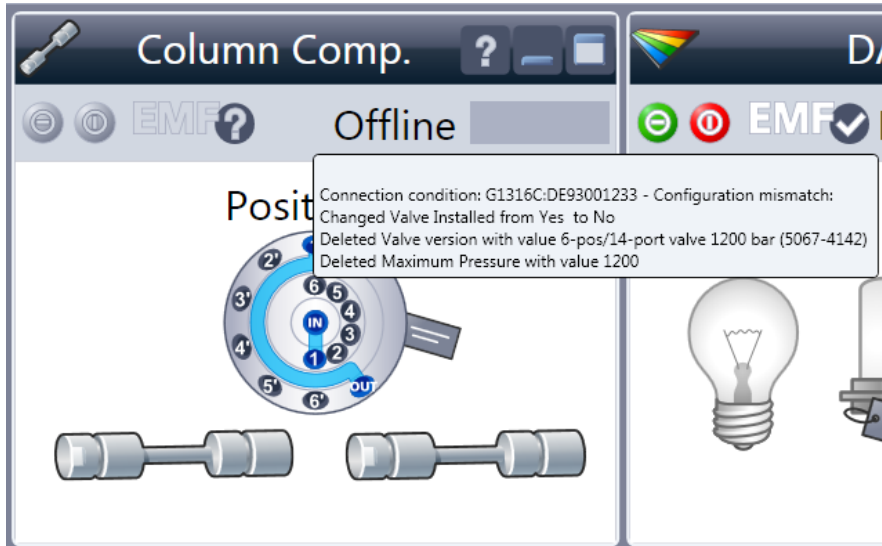
Restart CS, TCC still OFFLINE due to



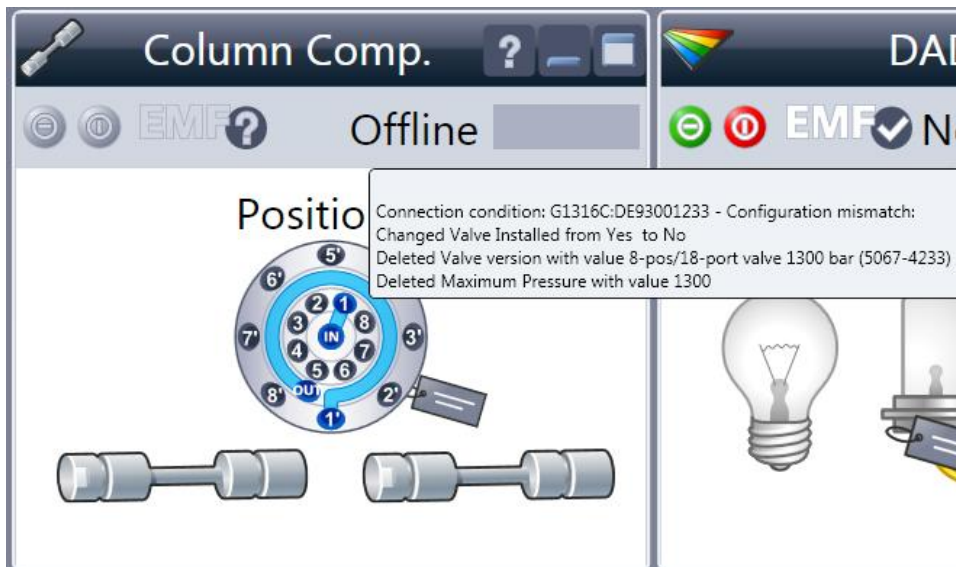
Closed CS

Updated FW to A.06.55

Restart CS, TCC still OFFLINE due to




Change in the Configuration screen to ne valve does not change the situation.



Close CS

Open LA B.02.07 – no valve is displayed

G1316C	1290 TCC		
	Serial #	DE93001233	Temperature [°C]
	Firmware:	A.06.55 [005]	Temperature Right [°C]
			Front Door
			Left Column ID

Temperature [°C] 22.92
 Temperature Right [°C] 22.87
 Front Door Door is open
 Left Column ID No column id in left heat

Controls

Control

Valve Position
 No valve available

Select the correct valve

Special Commands

Clear Error Thermostat/Oven Reset Forced Cold Start

Module Information

Identify Module Firmware Version

Set Valve Type


Valve Types: Send

Conversions

- 5067-4117, 2PS/6PT 1200bar
- 5067-4118, 2PS/10PT 1200bar
- 5067-4121, 8PS/9PT 1200bar Selector
- 5067-4142, 6 Col Selector 1200bar
- 5067-4214, 2ps/4pt-4pt Valve Head, 1200 bar, FS
- 5067-4233, 8 column selector, 1300 bar**
- 5067-4239, 8ps/9pt, PD, SEL, 1300bar
- 5067-4240, 2ps/10pt, PD, COL, 1300bar
- 5067-4241, 2PS/6PT 1300bar
- 5067-4244, 2ps/4pt-4pt, 2D-LC, 1300 bar
- 5067-4243, 6/14, PD, Col, 1300bar

Controls

Restart the TCC. The correct Valve type is shown.

G1316C	1290 TCC		
	Serial #	DE93001233	Temp
	Firmware:	A.06.55 [005]	Temp
			Front
			Left C.

Controls

Control

Valve Position

Set PN: 5067-4233
 SN:

Open CS - TCC is ONLINE and the configuration shows the correct valve.

